



# SUPPLY CHAIN OF THE FUTURE

## IMPACTS ON THE WORKFORCE

Michael Felbinger / Royden Edwards

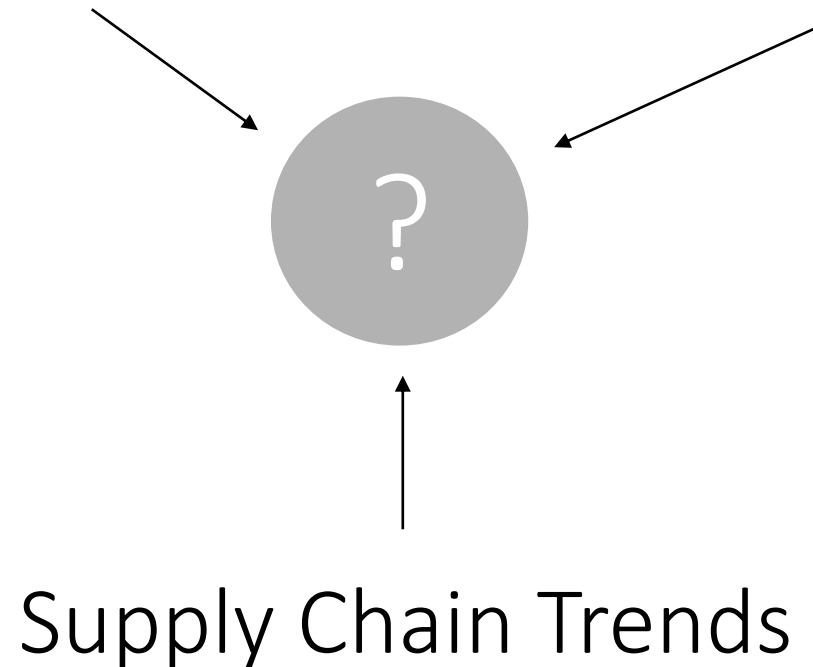
March 2020



What will impact the warehouse?

Socio-Economic Trends

Technology  
Development



# Socio Economic Trends

Urbanization

Aging population

Labor availability

Congested cities

Ergonomic regulations

Sharing economy

Environmental pressure

Globalization

De-globalization

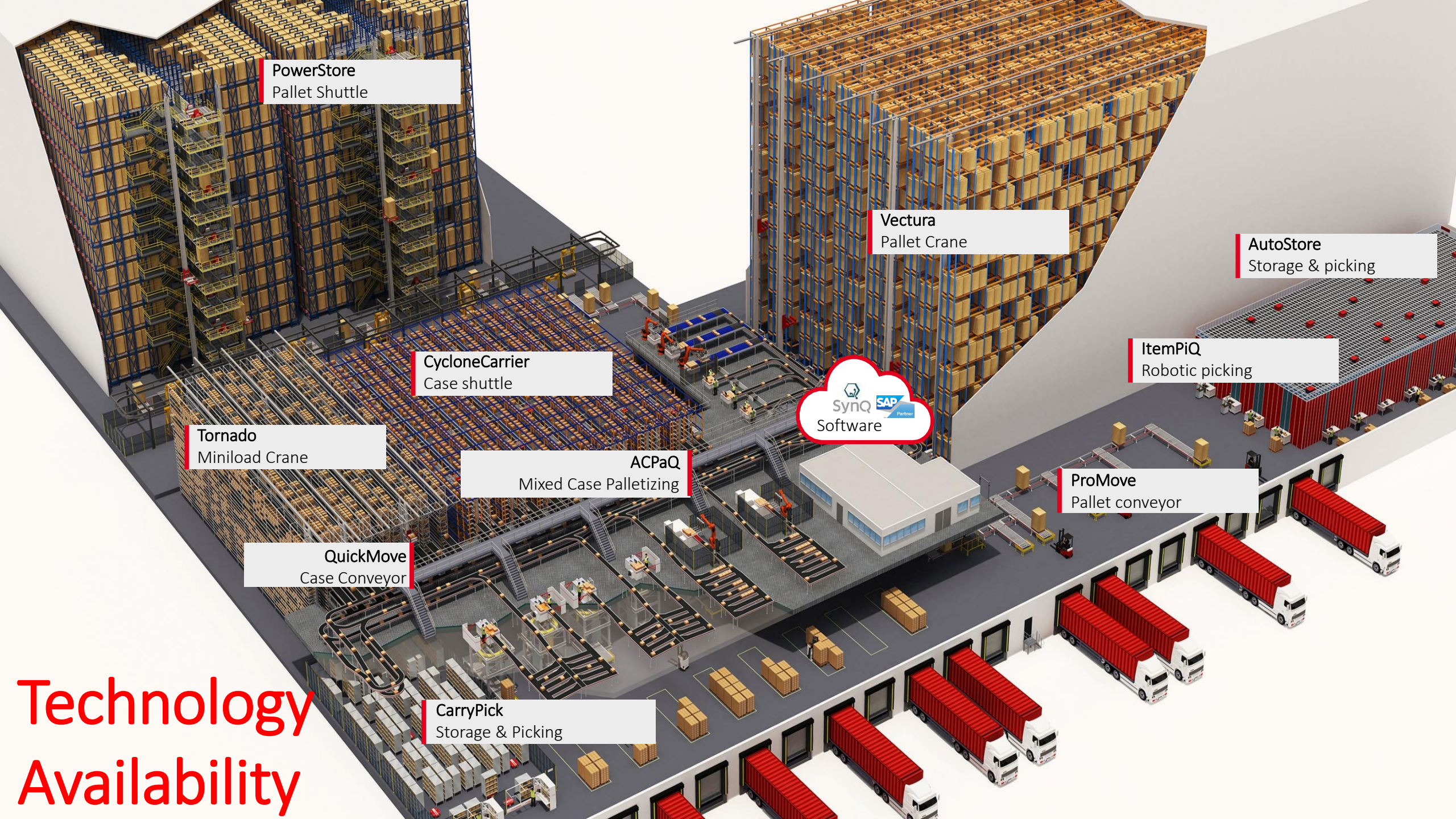
ARE YOU READY



# Supply Chain Trends

- Urban distribution centers
- 3D printing
- ~~Same day delivery,~~
- Next hour delivery
- Individual manufacturing
- Batch size one
- Return logistics
- Seamless distribution





PowerStore  
Pallet Shuttle

Vectura  
Pallet Crane

AutoStore  
Storage & picking

CycloneCarrier  
Case shuttle

ItemPiQ  
Robotic picking

Tornado  
Miniload Crane

ACPaQ  
Mixed Case Palletizing



QuickMove  
Case Conveyor

ProMove  
Pallet conveyor

CarryPick  
Storage & Picking

Technology  
Availability

## The Front Line of Change – The Supply Chain

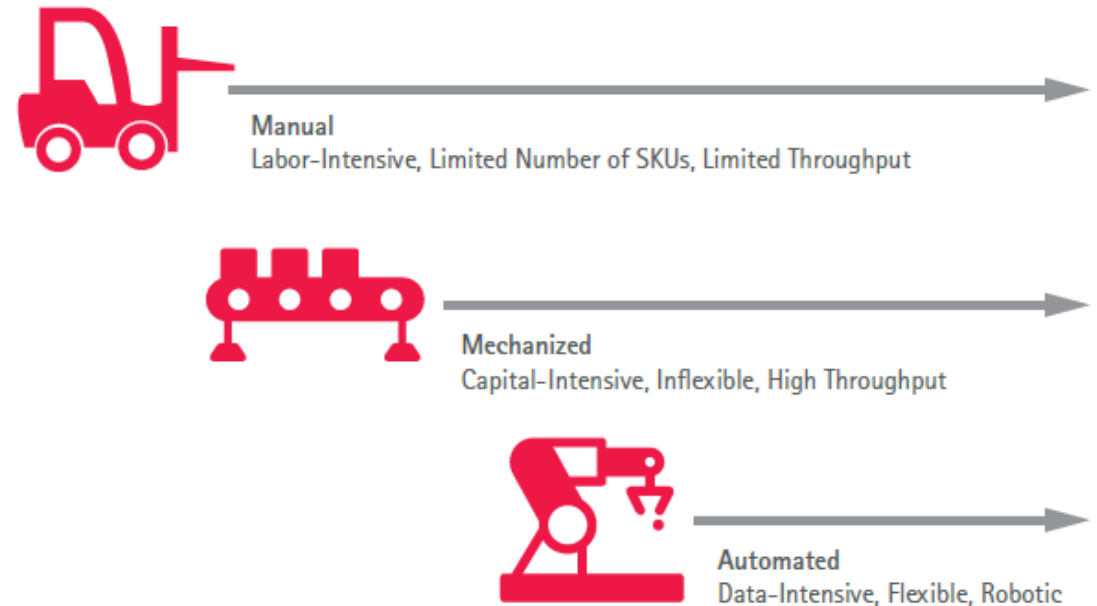
- Key interface between a company, its partners and customers.
- Swiftly impacted by changes in markets and business models.
- At the nexus of demographic and technological changes.
- Its inherently distributed nature increases the challenges — and benefits — of connectivity and technology management.
- This unique position means the supply chain must simultaneously adapt to digital transformation initiatives and shifts in consumer behavior and demographics.
- Key to its ability to accomplish this is intelligent automation and process integration.



## The Next Phase in the Evolution of the Warehouse

- For years warehouses were largely supported by manual labor.
- As SKUs increased and the need for speed and efficiency grew, warehouses entered mechanization.
- Prone to long deployment times and fixed nature, these systems were unable to adapt to changes in product mix or market demand.

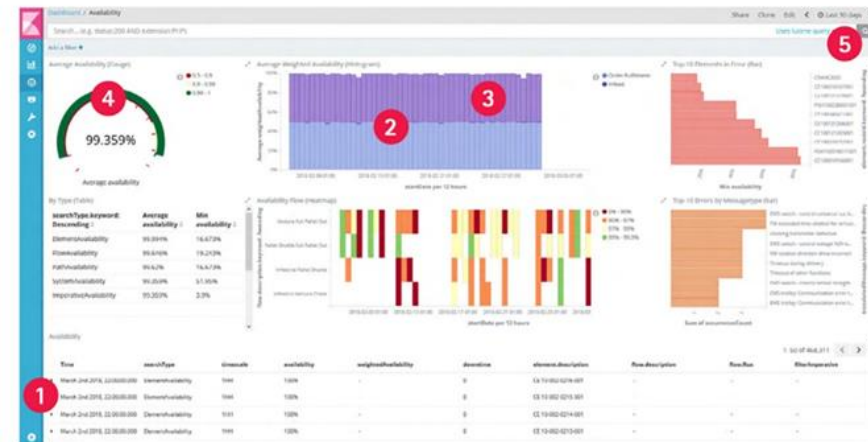
### EVOLUTION OF THE WAREHOUSE



# The Next Phase in the Evolution of the Warehouse

- The next phase has already begun and is marked by automation that focuses on intelligent systems.
- Data-Driven, Flexible and Robotic
  - The power of data is only beginning to be harnessed.
  - The key to harnessing that power is the warehouse management execution software.

*The key to harnessing the power of warehouse data lies in warehouse management and execution software.*

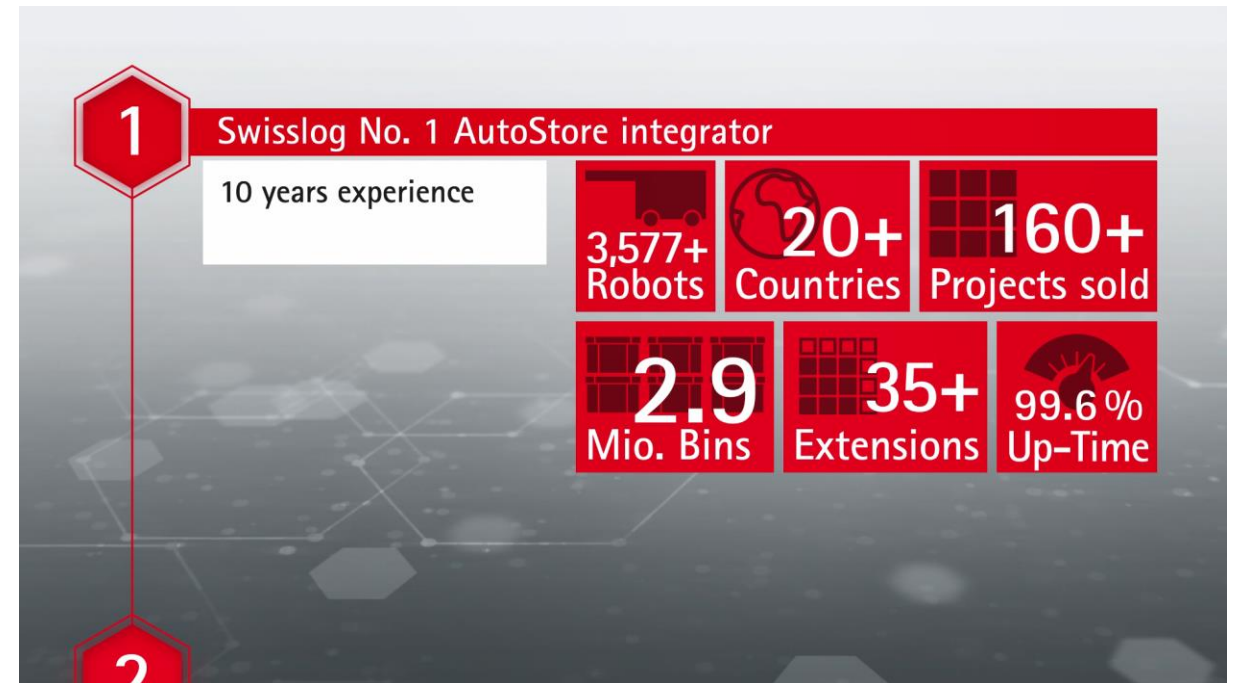


- 1 The SynQ Event Log shows the problem/issue at the bottom of the screen
- 2 The dip in the element availability can be seen in the 24 hour period graph below
- 3 Infeed is shown in purple
- 4 The overall availability for the period is 99.359%
- 5 View data by day, week or month or shift period

## The Next Phase in the Evolution of the Warehouse

- Using computer interfaces to load robot firmware.
- Analyzing reports and system statistics to determine preventative maintenance priorities.
- Troubleshooting wireless communications.

*Modular and scalable, AutoStore can adapt to change by adding storage modules, robots or pick stations, providing a high degree of flexibility.*

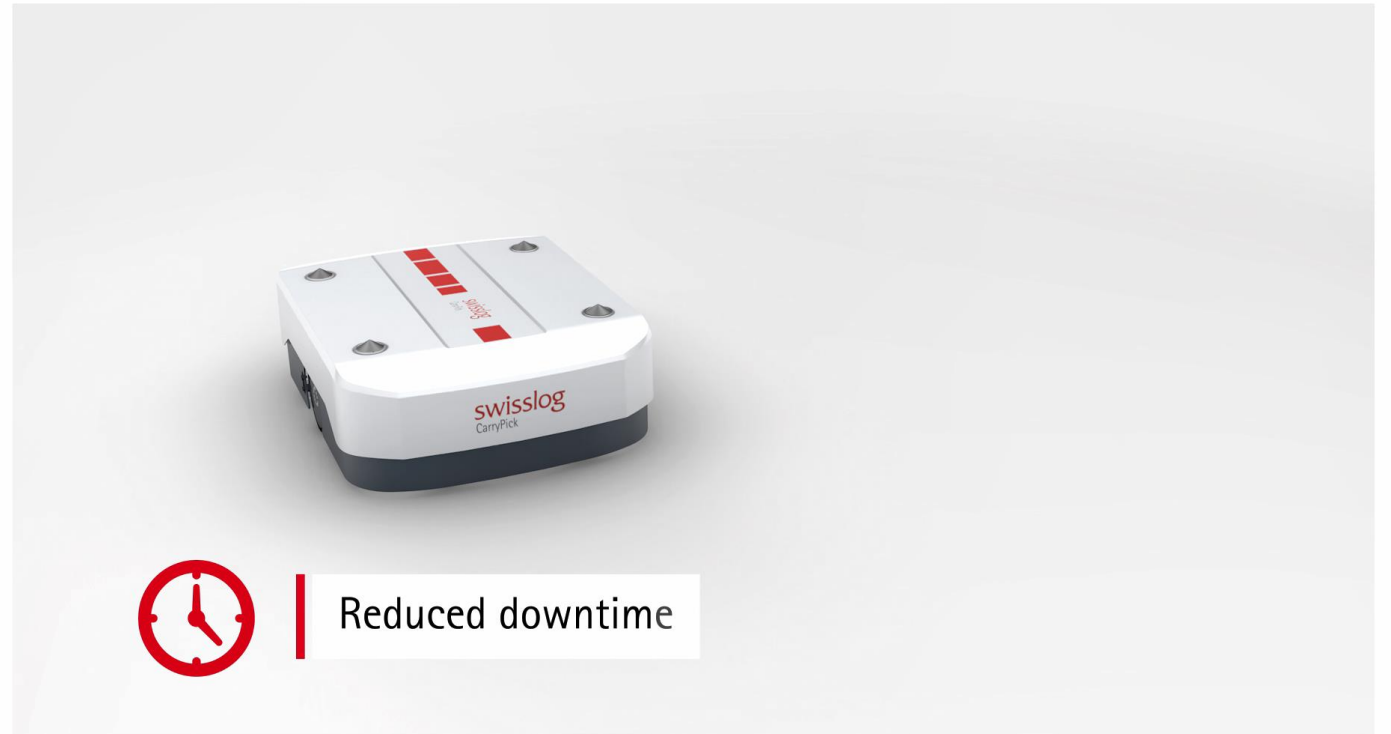


# The Next Phase in the Evolution of the Warehouse

## CarryPick – Mobile Robotic Storage and Retrieval System

- Mobile robotics
- Battery technology and support
- Software based traffic systems

*The intelligent robots require no physical changes to the warehouse so additional robots can be added at any time to meet increased throughput requirements.*



# The Next Phase in the Evolution of the Warehouse

## ItemPiQ – Single Item Picking

- Robotics
- Robot maintenance

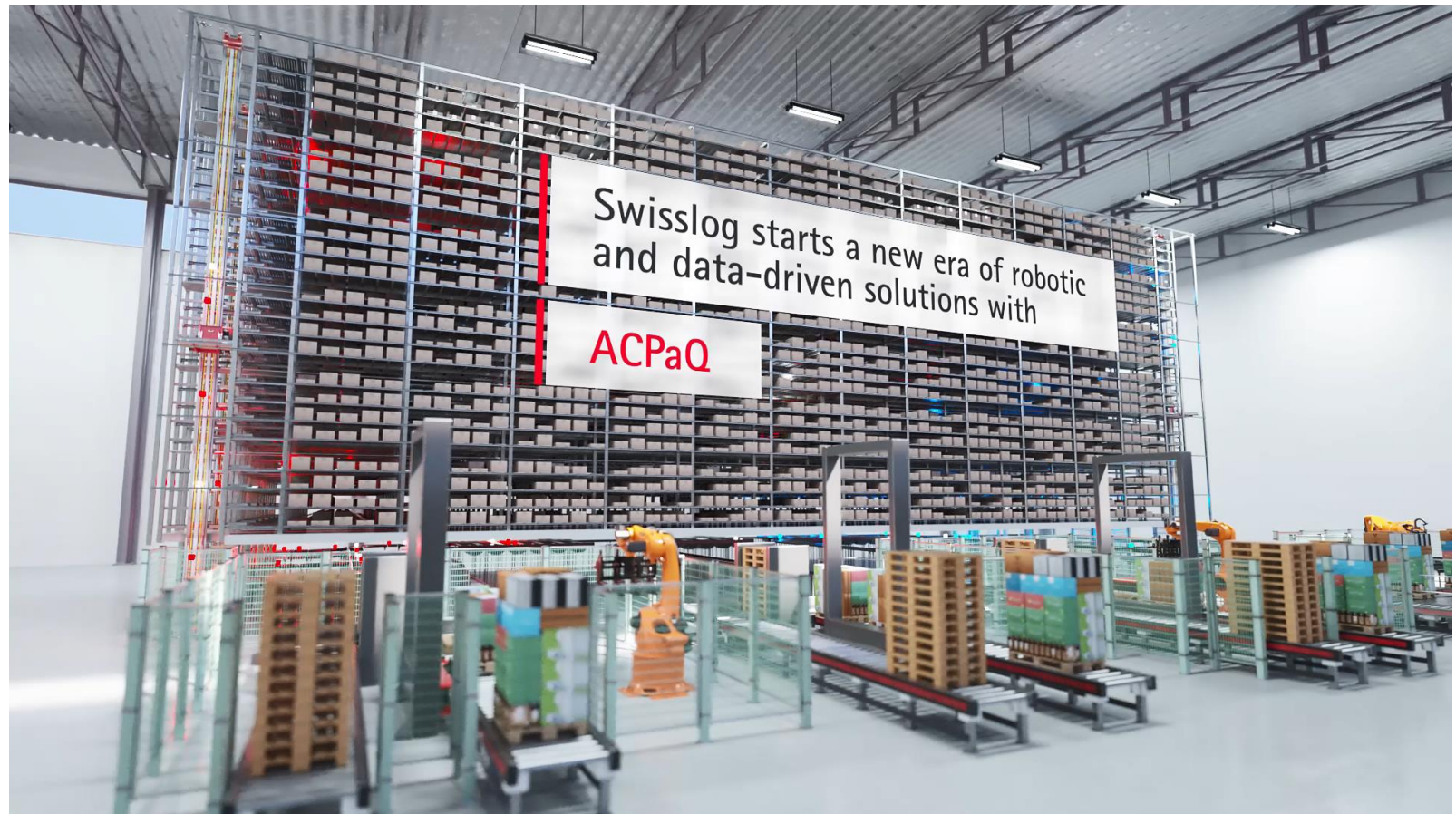
*ItemPiQ is now proving its value in standalone applications and when integrated with other automation systems such as AutoStore.*



# The Next Phase in the Evolution of the Warehouse

## ACPaq – Automated Mixed Case Palletizing

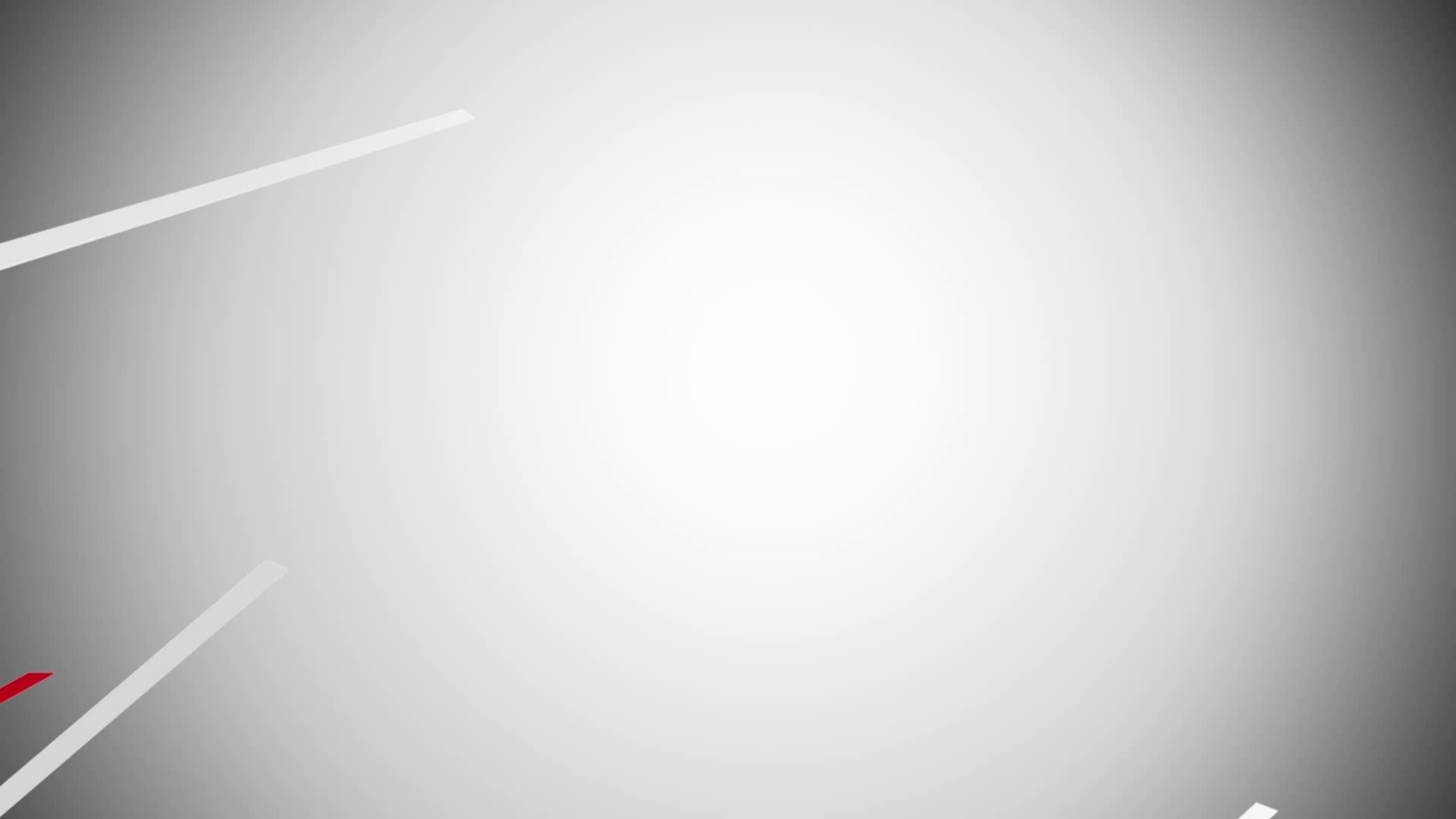
- Software comfort
- Distribution and logistics knowledge



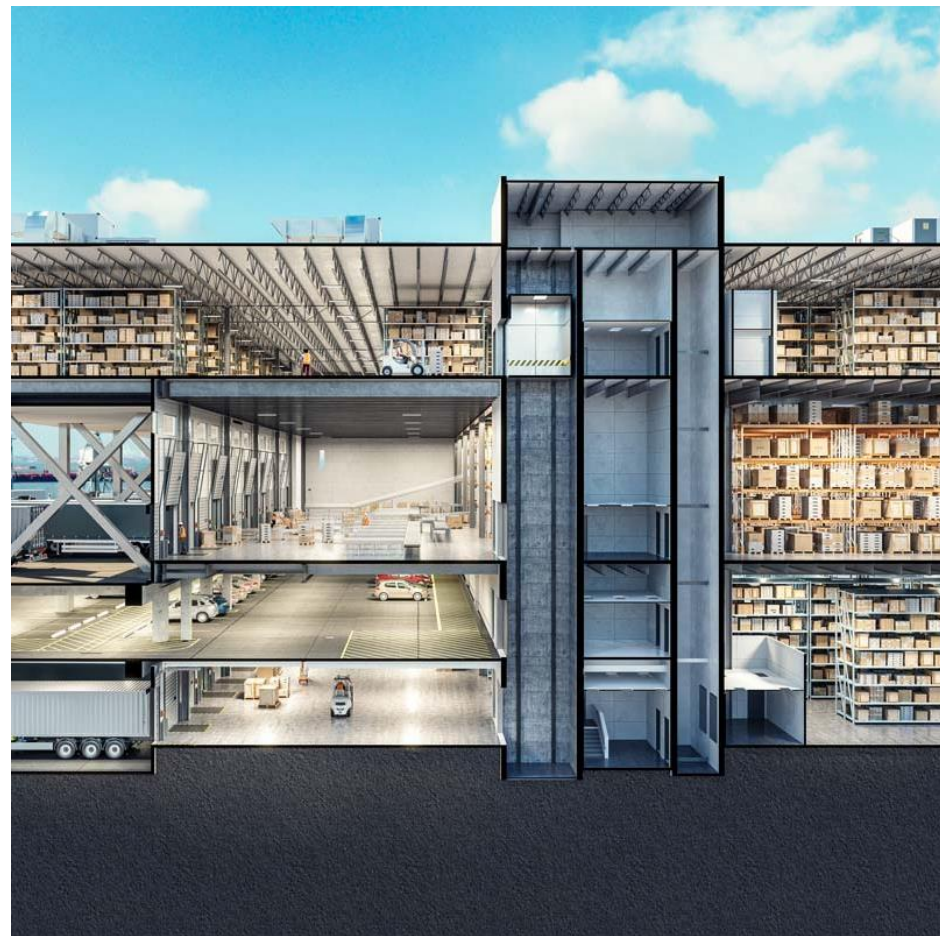
## What does this mean for the workforce?

- Computer knowledge and comfort
- Electronic tools and meters
- Virtual work force (RealWear/HoloLens)
- Soft skills
- Maintenance best practices and predictive maintenance
- Comfort about controls systems (Allen Bradley, Siemens, Beckhoff, etc.)





# The Emergence of New Storage Concepts and Multi-Level Warehouses



- Scarcity of real estate
- High land prices
- Multi-story facilities for urban markets
  - automation dependent
  - speed and efficiency
- Shrink inventory levels
  - frequent delivery
  - custom 3D printing
- New business models
  - shared facility
  - multiple sellers
  - consolidated shipments

# The “Pop-up” Urban Distribution Center

Any area can be transformed to a distribution center within a couple hours



- Plug and play
- Fully automated
- Add or remove modules over night
- Centrally fill modules and place in the city where needed
- Modules can be used for consumers and 3PL's

# The “Pop-up” Urban Distribution Center

Any flat surface can be a warehouse – in a matter of hours



- Weather-proof modules could be used to build pop-up urban distribution centers anywhere.
- Distribution centers can be reconfigured overnight by adding or removing modules.
- Storage modules can be pre-filled centrally, driven into the city and linked to the urban DC.
- Dedicated modules can handle vehicle loading, consumer pick-ups or – in future – drone launches.

## Managing the Last Mile

- Convenient consumer pick up
- Micro-fulfillment centers

*Because of increased urbanization and the growing expectation for same-day delivery of almost everything, it is becoming necessary to rethink not only how warehouses operate but where they are located.*



LET'S DISCUSS YOUR THOUGHTS





VISIT SWISSLOG AT BOOTH #7657



Swisslog shapes the future of intralogistics with robotic, data-driven and flexible automated solutions that achieve exceptional value for our customers.

[www.swisslog.com](http://www.swisslog.com)

Swisslog is a member of the KUKA Group, a leading global supplier of intelligent automation solutions.

[www.kuka.com](http://www.kuka.com)

Michael Felbinger

Vice President Customer Service

Royden Edwards

Director of Services, Customer Service

**Swisslog Americas**